

# Spectrum VUE-8™ 8-Port Spectrum Analyzer

Network & Bandwidth Management



## Overview

Our Spectrum VUE-8™ is a next generation spectrum measurement and analysis unit with an integrated 8-port RF switching capability. It is ideal for either local or remote monitoring of multiple feeds and carriers in satellite, cable or terrestrial wireless networks. Spectrum VUE-8 is fully integrated with our NetVue™ Integrated Management System (IMS) and provides real-time remote interfacing, script-based performance monitoring, trend analysis, thumbnail confidence monitoring and more. It can function as an independent spectrum analyzer or can be easily integrated into a larger measurement network.

The Spectrum VUE-8 uses state-of-the-art digital technology and Fast Fourier Transformations (FFT) to make fast and accurate measurements. With a very low noise floor and large dynamic range, it is well-suited to measure any type of satellite-based carrier, including continuous wave (CW), low, medium, and high symbol rate carriers, beacon signals and other carrier monitoring applications. Spectrum VUE-8 accepts all signals from 5 MHz to 3 GHz and input power levels ranging from -110 to +5 dBm. The Resolution Bandwidth (RBW) varies from 1 Hz to 15 MHz. The Spectrum VUE-8 can be connected to an external 10 MHz reference for improved frequency accuracy and stability. All data communications with the Spectrum VUE-8 occurs via Ethernet to the NetVue IMS.

It can be installed anywhere, occupying only 1U (1.75 inches / 4.44 cm) in a standard equipment rack, allowing you to monitor up to eight different input feeds. This is ideal for teleports, VSAT hub cable head ends, cell towers or broadcast facilities with multiple feeds to monitor. It is available with industry standard 50-ohm SMA connectors on the inputs.

## Network Monitoring Features

The powerful Graphical User Interface (GUI) of Spectrum VUE-8 is available through NetVue and by using the NetVue Cube via a web browser – no additional software is required. The GUI is very easy to use and operates like most traditional spectrum analyzers. The combination of the NetVue and Spectrum VUE-8 provides local or remote (distributed) spectral monitoring in real-time or as an automated function. The user interface via NetVue allows the user to choose monitoring limits such as peak power or spectral limits. The Spectrum Vue-8 can be configured to support Cross-Pol Isolation measurement function, allowing you to display both Co-Pol and Cross-Pol signals simultaneously, along with the isolation value.

The Spectrum VUE-8 provides network access for local or remote technical staff connected to the NetVue to perform spectral analysis with the Spectrum VUE-8. This allows all technical staff the ability to monitor feeds and carriers at any time and from any location in the world using the NetVue Cube.

## Feature Summary

- Fully Integrated with NetVue
- Real-time carrier monitoring
- Automated carrier monitoring
- Checking multiple carriers for continuous confidence monitoring
- Effective Co-Pol/Cross-Pol check during commissioning
- Automatic alarm for change in carrier level and spectral limits

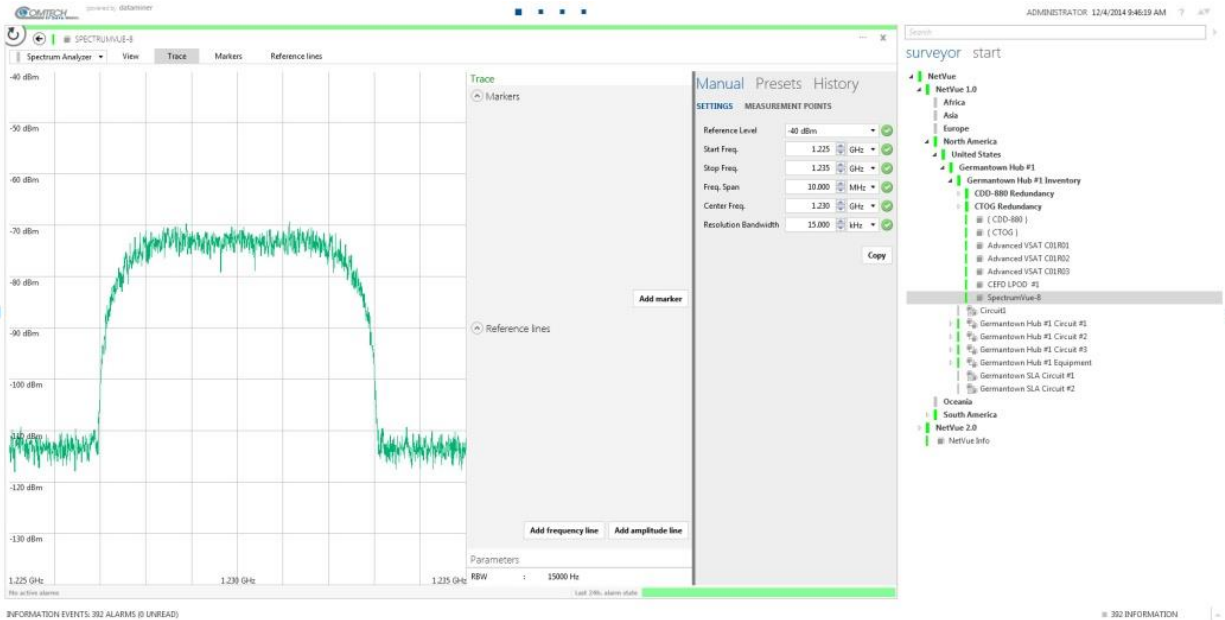
## Typical Users

- Teleport Operators
- Satellite Service Providers
- Mobile & Telecom Network Operators
- Offshore & Maritime
- Network Operators

## Common Applications

- Carrier Monitoring and Management





## Specifications<sup>1</sup>

### RF Input

Input Frequency Range	5 MHz to 3,000 MHz
Useable Dynamic Range	-110 to +5 dBm (aggregate)
Noise Floor	-150 dBm/Hz typical at min attn -150 dBm/Hz typical at max attn
Phase Noise (worst case at 3 GHz)	-80 dBc/Hz at 1 kHz offset -95 dBc/Hz at 100 kHz offset -125 dBc/Hz at 1 MHz offset
Maximum Safe Input	+10 dBm
Input Isolation (port to port)	45 dB (min)
Input Return Loss	-15 dB (min)

### Measurements

Amplitude Accuracy	± 0.5 dB (at 25°C) <sup>2</sup> ± 1.0 dB (0 to 40°C)
Frequency Accuracy	± 2.6 ppm (internal) or as per external
Frequency Resolution	1 Hz
Resolution Bandwidth <sup>3</sup>	1 Hz to 15 MHz
Analysis Bandwidth	up to 220 MHz
Spurious	
Images	< -55 dBc (typical)
Aliasing	< -55 dBc (typical)
DC Offset	< -30 dBc (typical)

Averaging	up to 255 averages
Measurement Speed <sup>4</sup>	
500 MHz span, 1 MHz RBW	200 ms
200 MHz span, 30 kHz RBW	630 ms
80 MHz span, 100 kHz RBW	170 ms
3.5 MHz span, 8 kHz RBW	90 ms

### Other Specifications

Reference Input	10 MHz, -5 dBm to +13 dBm
Control Interface	TCP/IP API, SNMP, & HTTP
Power Requirements	120/240 VAC, 50/60 Hz, 25W
Operational Temperature Range	0 to 40°C

### Physical

Dimensions (height x width x depth)	1.75" x 19" x 10" (4.44 x 48.26 x 25.40 cm)
Weight	5 lbs (2.27 kg)

<sup>1</sup>All specification at 25°C unless otherwise noted and are subject to change without notice.

<sup>2</sup> Measurement conditions: 10 averages, input level between -8 dBm and -68 dBm, 3 sigma.

<sup>3</sup> Resolution bandwidths auto or manual adjustable.

<sup>4</sup> Expected rates with 10 averages, speed optimization.



Spectrum VUE-8 Back Panel



2114 West 7th Street, Tempe, Arizona 85281 USA  
Voice: +1.480.333.2200 • Fax: +1.480.333.2540 • Email: sales@comtechefdata.com

See all of Comtech EF Data's Patents and Patents Pending at <http://patents.comtechefdata.com>

Comtech EF Data reserves the right to change specifications of products described in this document at any time without notice and without obligation to notify any person of such changes. Information in this document may differ from that published in other Comtech EF Data documents. Refer to the website or contact Customer Service for the latest released product information